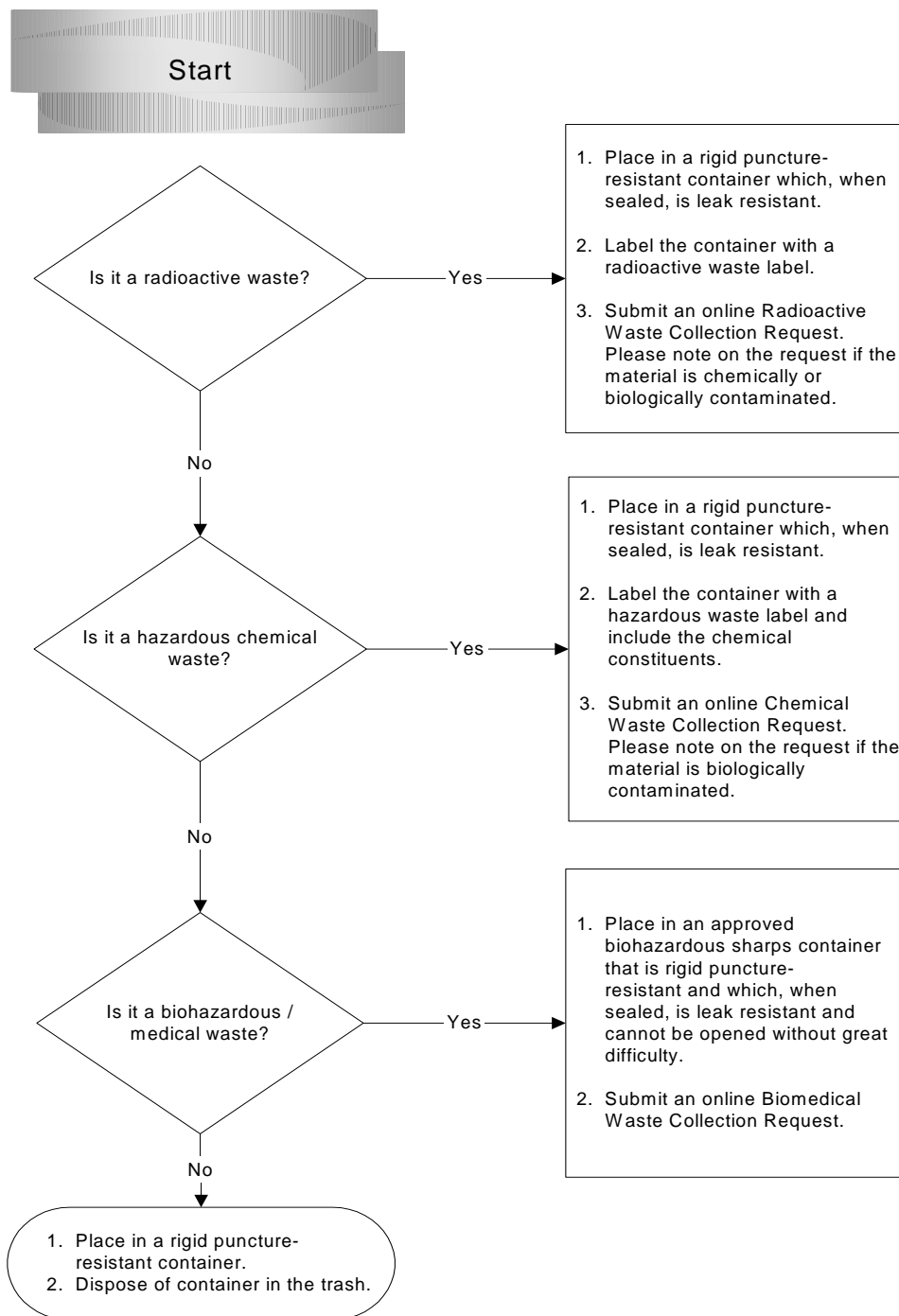




Sharps Waste Guidelines

Sharps are any device having acute rigid corners, edges or protuberances capable of cutting or piercing skin or regular waste bags. Some examples include needles, razors, scalpel blades, broken glass and plastic, Pasteur pipettes, pipettes, pipette tips, capillary tubes, microscope slides and other sharp-cornered objects. Follow the flowchart to appropriately manage your sharps waste.



Waste Collection Requests are available online at www.ehs.uci.edu/programs/enviro/.