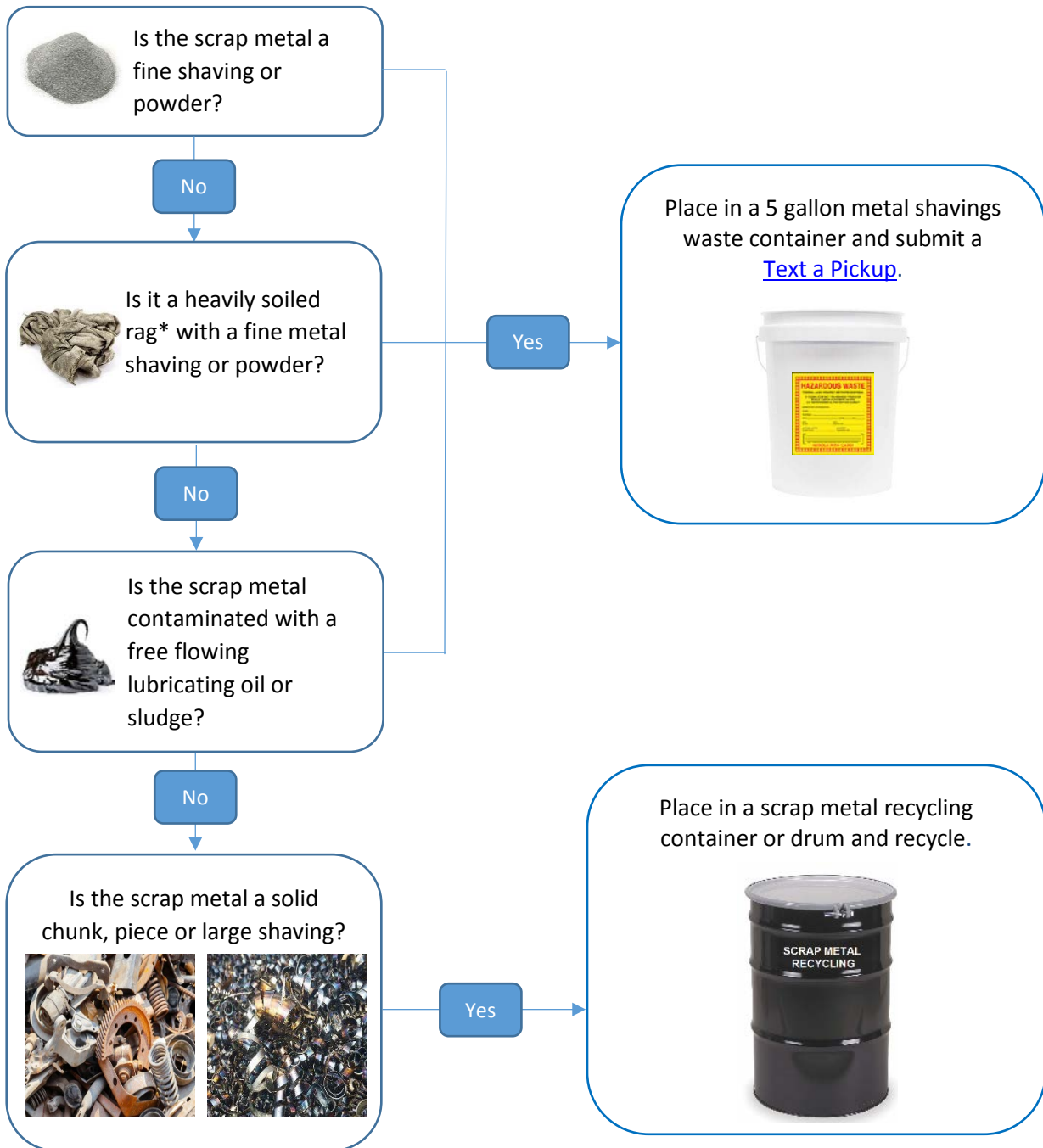


Scrap Metal Recycling and Disposal

Scrap metal includes manufactured solid metal objects and metal workings including cuttings, stampings, grindings and shavings. Most scrap metal can be recycled; however, certain types of scrap metal must be managed as a hazardous chemical waste.

Follow the flowchart to appropriately manage your scrap metal.



Do not dispose of fine metal shavings or powder in the regular trash.

* Rags soiled with a fine metal shaving or powder is easily removed when lightly shaken.