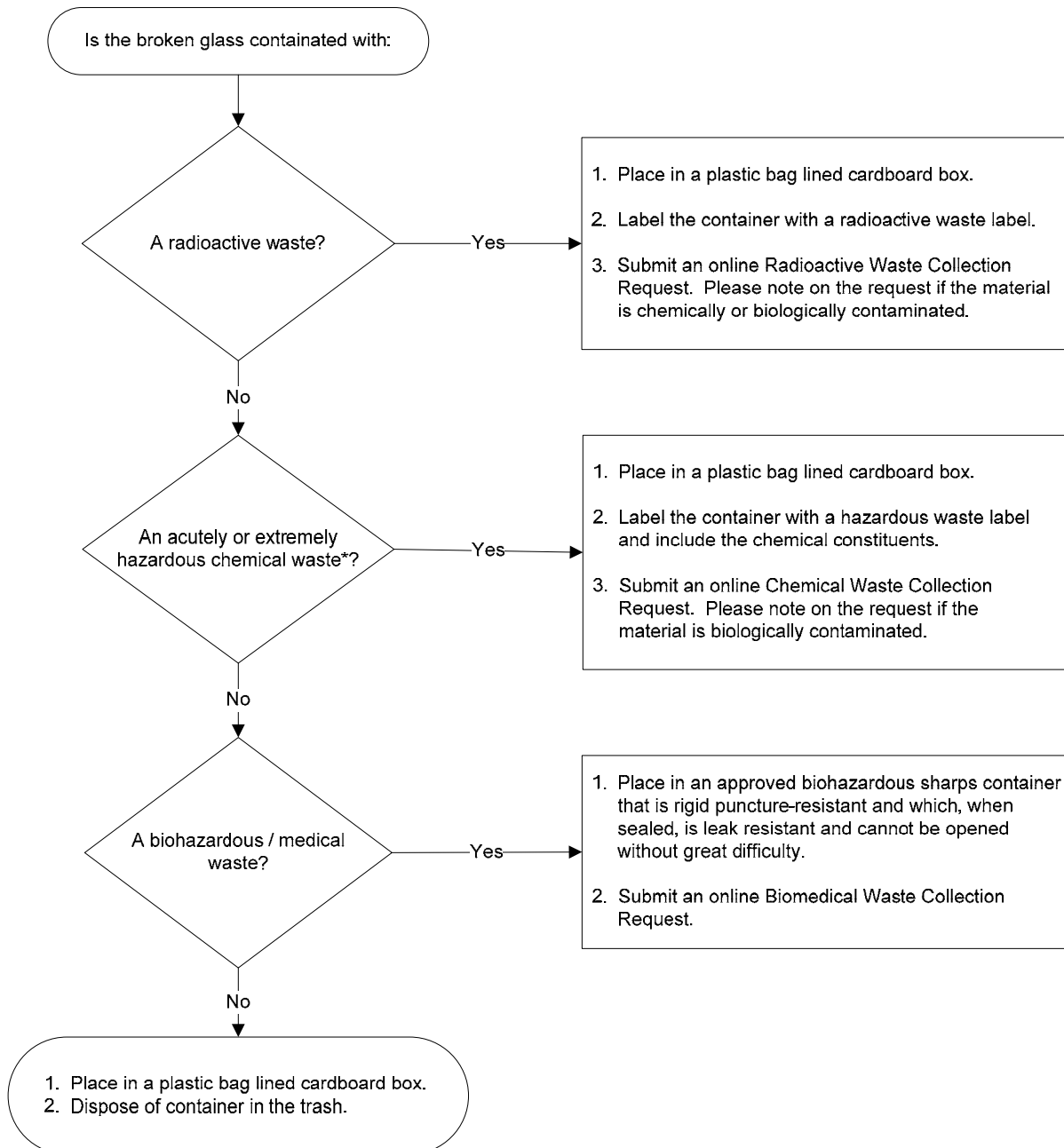




Broken Glass Guidelines



* For a list of acutely or extremely hazardous waste please visit www.ehs.uci.edu/programs/enviro/hwasteguidelines.html#empty.

At no time should full or partially full hazardous materials/waste containers be placed in the trash.

To be considered empty:

- Liquid container - no liquid can drain from the container when tilted in any direction.
- Solid container (powder, sludge, grease, thick resin, crystals, etc.) - the walls of the container must be scraped clean and cannot contain any adhered or encrusted materials.

Hazardous Waste Collection and Empty Container Requests are available online at www.ehs.uci.edu/programs/enviro/.