

## Cleaning Guidance for University-Provided Housing in Response to COVID-19

Revised: March 19, 2022

**Locations included:** Tierney House, Student Housing for RAs & HAs, Anza-Borrego Desert Research Center and Burns Pinon Ridge Reserve

### PURPOSE

This guidance provides recommendations on cleaning and disinfecting of University-provided housing. It is aimed at limiting the survival of COVID-19 in key environments. These recommendations will be updated as additional information becomes available.

### DEFINITIONS:

- **Cleaning** refers to the removal of dirt and impurities, including viruses, from surfaces. Cleaning alone does not kill viruses. But by removing the viruses, it decreases their number and therefore any risk of spreading infection.
- **Disinfecting** works by using chemicals, for example EPA-registered disinfectants, to kill viruses on surfaces. This process does not necessarily clean dirt off the surface but kills viruses that are present on the surface.
- **Contact Time** is the time a disinfectant is in direct contact with the surface or item to be disinfected. For surface disinfection, this period is framed by the application to the surface and leaving the disinfectant on the surface for the required contact time. Disinfectants have varying amounts of contact time.
- **Quarantine** separates and restricts the movement of people who were exposed to a contagious disease to see if they become sick. Individuals identified for quarantine include those who have been exposed to the virus and are awaiting COVID-19 test results. A person may have been exposed to the virus without knowing it (for example, when traveling or out in the community), or they could have the virus without feeling symptoms. Quarantine helps limit further spread of COVID-19.
- **Quarantine or Isolation Spaces** refers to areas in University Provided Housing identified as quarantine/isolation spaces (If available)
- **PUI** is the abbreviated term for Person Under Investigation and is yet to be confirmed via testing whether the person is positive for the disease or not.
- **Consolidated Spaces** refers to the areas in University Provided Housing that have consolidated UCI affiliated residents into contiguous buildings.
- **Isolation** refers to the separation of sick people with a contagious disease from people who are not sick. Individuals identified for isolation include those who have received positive test results for COVID-19.

### GENERAL RECOMMENDATIONS

The following recommendations apply to all spaces across University-provided Housing. If a person with suspected/confirmed COVID-19 visited or used any space, EH&S recommends that personnel:

- Close off and barricade the space
- Open outside doors and windows and use ventilating fans to increase air circulation in the area.
- Wait 24 hours or as long as practical before beginning cleaning and disinfection.

If it has been more than 3 days since the person with suspected/confirmed COVID-19 visited or used the space, additional cleaning and disinfection is not necessary.

#### **Recommendations for Routine Surface Cleaning in University-Provided Housing**

- Disposable gloves should be used while using cleaning and disinfecting agents. Doff and dispose of them promptly after use. Use an EPA-approved disinfectant, and use according to the instructions on the label, including wearing gloves and having good ventilation during use of the product. Follow standard cleaning procedures **AND** follow the manufacturer's instructions while using cleaning and disinfection products. Follow instructions for appropriate product concentration, application method, contact time, and clean common areas at least once a day, and as needed. Use disinfecting wipes on commonly used surfaces and wipe down before and after use. When disinfecting wipes are not available, spray disinfectant on paper towel and wipe down surface.

Commonly used areas or items include:

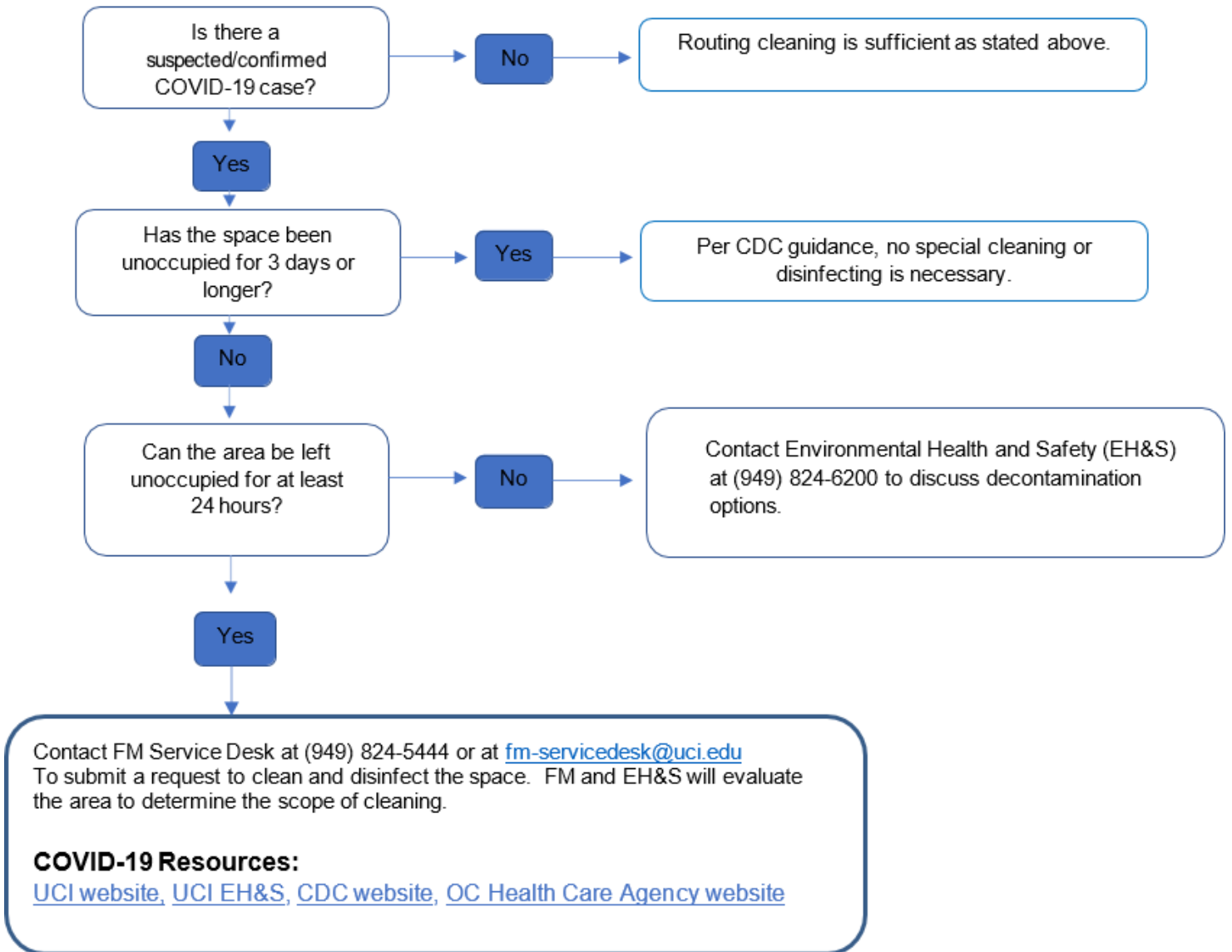
- Counters and tabletops
- Doorknobs
- Fixtures
- Toilets
- Phones and headsets

After cleaning and disinfecting, remove and dispose of gloves. Immediately clean your hands with soap and water or with hand sanitizer containing at least 60% alcohol. Place all used gloves and other contaminated items in a lined container before disposing of them with other household waste.

- If necessary, a 3<sup>rd</sup> party contractor may be used by the University-provided housing supervisor/manager to clean and disinfect the housing unit(s).

- Resident(s) should perform hand hygiene frequently. Wash hands with soap and water for at least 20 seconds or use hand sanitizer containing at least 60% alcohol.
- Resident(s) should follow respiratory etiquette: Cover coughs and sneezes with a tissue, then throw into a lined trash container.
- Resident(s) should avoid sharing personal household items, dishes, drinking glasses, cups, eating utensils, towels or bedding with other people or pets in your home. After using these items, wash hands thoroughly with soap and water.

**Follow the flowchart to request COVID-19 disinfection and cleaning:**



Note: If the space must be cleaned before 24 hours, please contact EHS at (949) 824-6200.

**Additional Resources**

UCI is closely monitoring the COVID-19 situation and associated communications from the county, state and federal authorities. We will continue to provide updates and take steps to ensure the health and safety of our community. To view updates and obtain workplace posters related to COVID-19, please visit <https://uci.edu/coronavirus/>.

To view specific guidance regarding the various EH&S COVID-19, employees may also visit <https://www.ehs.uci.edu/PublicHealth/covid-19/> for more details.

In addition to the procedures listed above, employees should follow the [Centers for Disease Control](#) guidelines for disinfecting surfaces.